



*Assembly Instructions*

## **Ridgemont Live Edge Locust Bench**



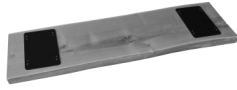
*Thank you for choosing **A&L Furniture Co.***

*We hope that this piece brings you many years of enjoyment!*

For help with assembling your furniture,  
or if you have missing hardware, please email us at  
[help@aandlfurniture.com](mailto:help@aandlfurniture.com) or call us at 866-896-5747

## PARTS (included)

Ⓐ Bench Top (1)



Ⓑ Bench Legs (2)



## HARDWARE (included)

ⓐ 1/2" Bolts (8)



ⓑ Allen Wrench (1)



## STEP 1

Lay the bench top upside down on a clean flat surface. Set the bench legs on top of the metal plates on the bench top as shown in photo 1. Take four 1/2" bolts, place them in the predrilled holes in the plate on the bench legs & turn them into the threaded holes in the bench top as shown in photos 2 & 3. Tighten with the Allen wrench. Repeat with other leg.

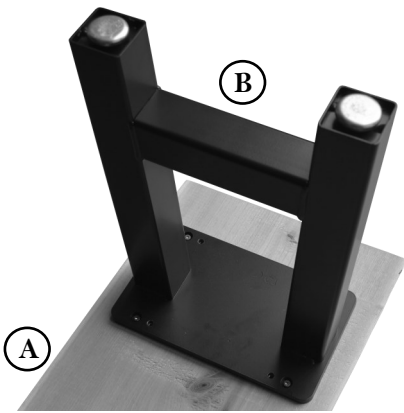


Photo 1

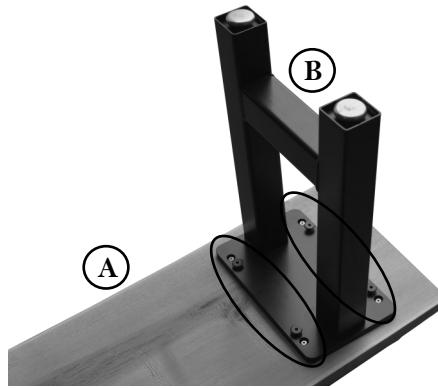


Photo 2



Photo 3

## STEP 2

Set the bench upright. If it is wobbly or not stable, adjust the leg levelers that are turned into the bottom of the legs. See photos 4 & 5.

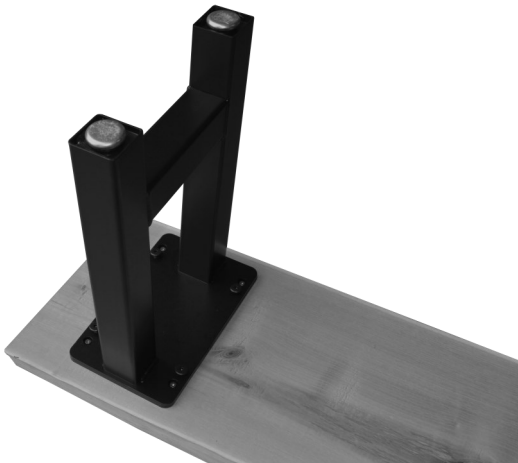


Photo 4



Photo 5