



Assembly Instructions

Lighthouse with Base



*Thank you for choosing **A&L Furniture Co.***

We hope that this piece brings you many years of enjoyment!

For help with assembling your furniture,
or if you have missing hardware, please email us at
help@aandlfurniture.com or call us at 866-896-5747

PARTS (included)

(A) Body



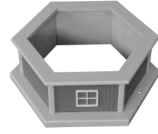
(B) Head



(C) Cap



(D) Base



HARDWARE (included)

(a) 1½" Bolts (2)

(b) 1½" Screws (6)

(c) Ground Stakes (2)

(d) Square Drive Bit (1)



TOOLS NEEDED

Screw gun

Phillips Head Screwdriver

Hammer

STEP 1

Remove the four screws at the ends of the shipping strips to unfasten from the lighthouse body. (See photo 1.) Pull the head out of the lighthouse. Remove the shipping strips from the head & discard. (See photo 2.)

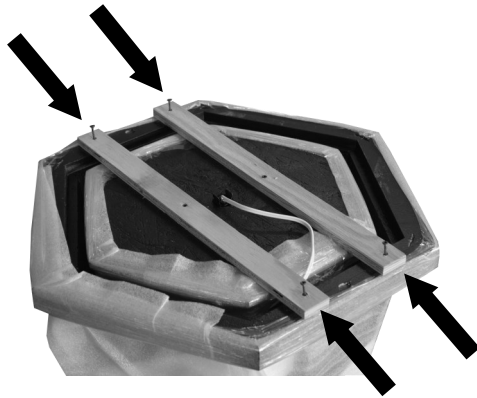


photo 1

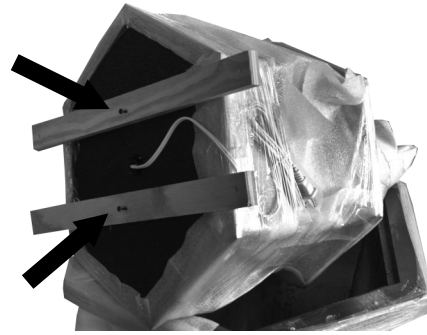


photo 2

STEP 2

Set the lighthouse body upside down. Place the base upside down on the bottom of the body aligning the sides as shown. (See photo 3.) Place the six 1½" screws in the predrilled holes in the inside of the base & screw into the body with the screw gun. (See photos 4 & 5.)

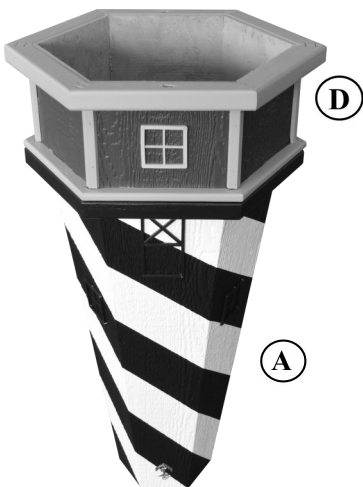


photo 3

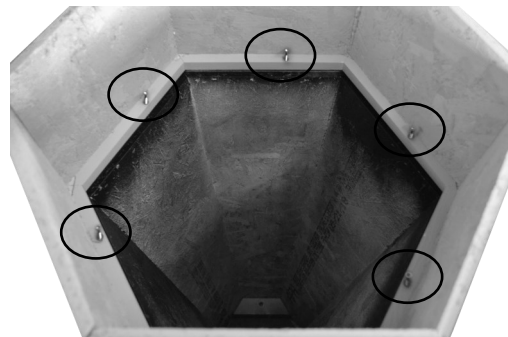


photo 4

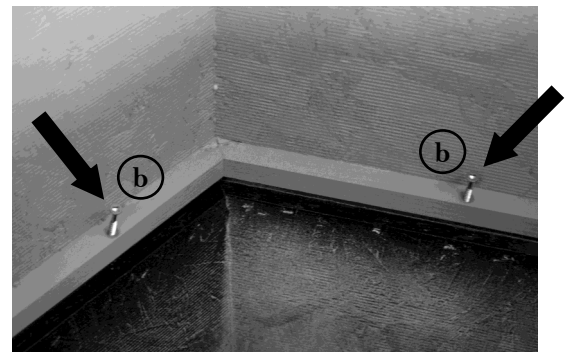


photo 5

STEP 3

Set the lighthouse body upright & place the head on top, aligning the predrilled holes inside the head with the threaded inserts in the top of the body. (See photo 6.) Insert the 1½" bolts in the predrilled holes inside the head. (See photo 7.) Using the phillips head screwdriver turn the bolts into the threaded inserts & tighten.



photo 6

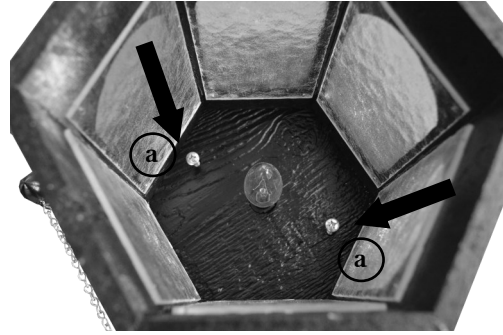


photo 7

STEP 4

Place the cap on top of the head. (See photo 8.) Take the lighthouse to the desired location & pound in the 2 ground stakes in the predrilled holes in the base ring. (See photo 9.) If your lighthouse included the optional solar light kit, refer to the operating instructions enclosed with it.



photo 8

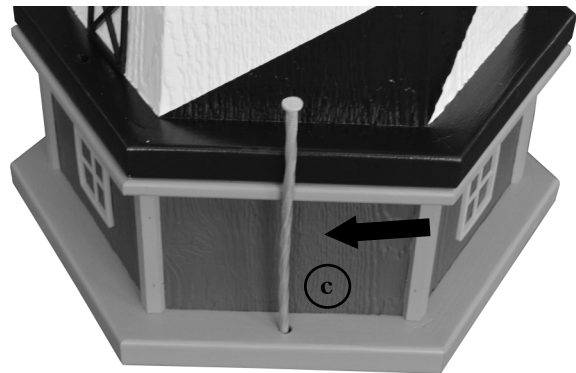


photo 9