



Assembly Instructions

Hickory Swivel Bar Chair



*Thank you for choosing **A&L Furniture Co.***

We hope that this piece brings you many years of enjoyment!

For help with assembling your furniture,
or if you have missing hardware, please email us at
help@aandlfurniture.com or call us at 866-896-5747

PARTS (included)

(A) Chair Seat (1)

(B) Chair Base (1)



TOOLS NEEDED

7/16" Wrench

HARDWARE (included)

(a) 1/4" x 1 3/4" Bolts (4)

(b) Flange Nuts (4)

(c) Allen Wrench (1)



STEP 1

Place the chair seat on the base and lift the front of the seat up a little bit. (See photo 1.) Insert 2 bolts through the swivel and push them down through the predrilled holes in the base. (See photo 2.) Now you will need to spin the seat around a half turn to repeat the procedure in the back (the swivel bracket is angled and has a wider opening on one side. Therefore, you need to spin the seat partway around for the last 2 bolts).

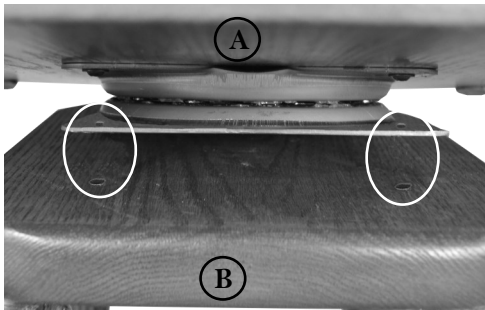


photo 1

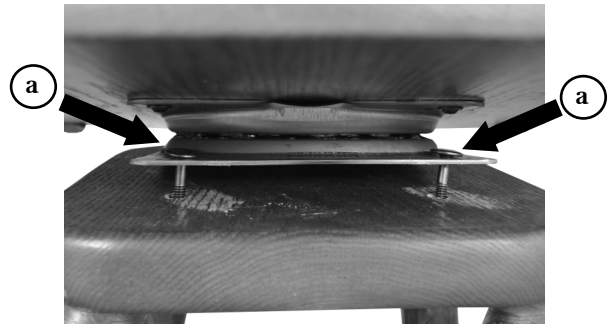


photo 2

STEP 2

You should now have 4 bolts sticking down through the bottom of the base. (See photo 3.) Attach the flange nuts and tighten with 7/16" wrench. (See photo 4.)

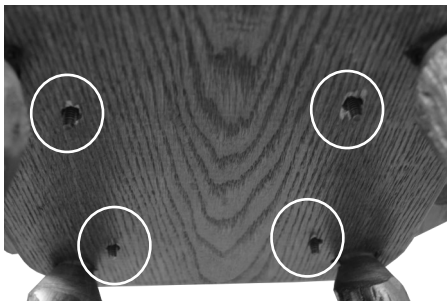


photo 3

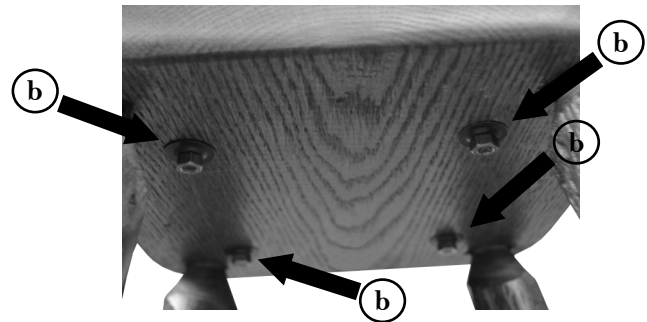


photo 4