



Assembly Instructions

2' Lighthouse with Base



*Thank you for choosing **A&L Furniture Co.***

We hope that this piece brings you many years of enjoyment!

For help with assembling your furniture,
or if you have missing hardware, please email us at
help@aandlfurniture.com or call us at 866-896-5747

PARTS (included)

(A) Body



(B) Cap



(C) Base



HARDWARE (included)

(a) 1½" Screws (6)

(b) Ground Stakes (2)

(c) Square Drive Bit (1)



TOOLS NEEDED

Screw gun

Hammer

STEP 1

Set the lighthouse body upside down. Place the base upside down on the bottom of the body aligning the sides as shown. (See photo 1.) Place the six 1½" screws in the predrilled holes in the inside of the base & screw into the body with the screw gun. (See photos 2 & 3.)

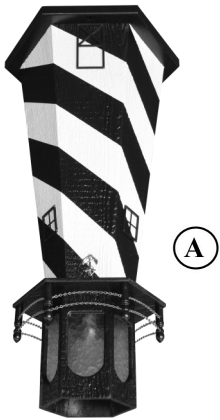


photo 1

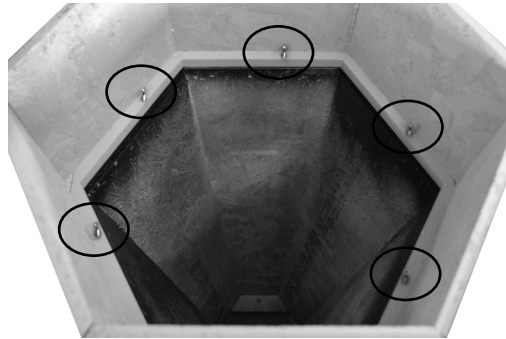


photo 2

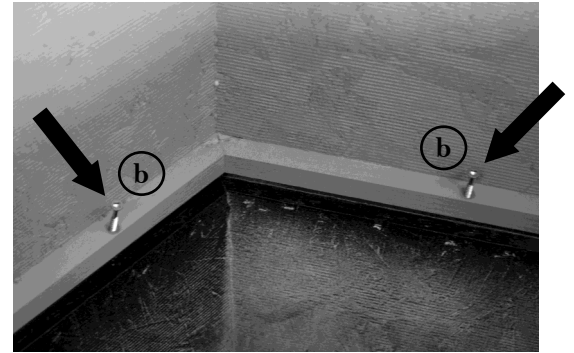


photo 3

STEP 2

Place the cap on top of the head. (See photo 4.) Take the lighthouse to the desired location & pound in the 2 ground stakes in the predrilled holes in the base ring. (See photo 5.)



photo 4

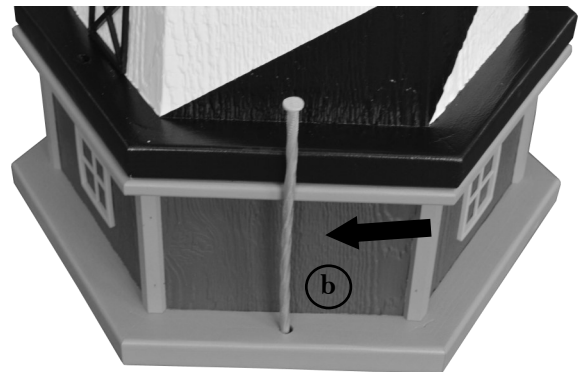


photo 5