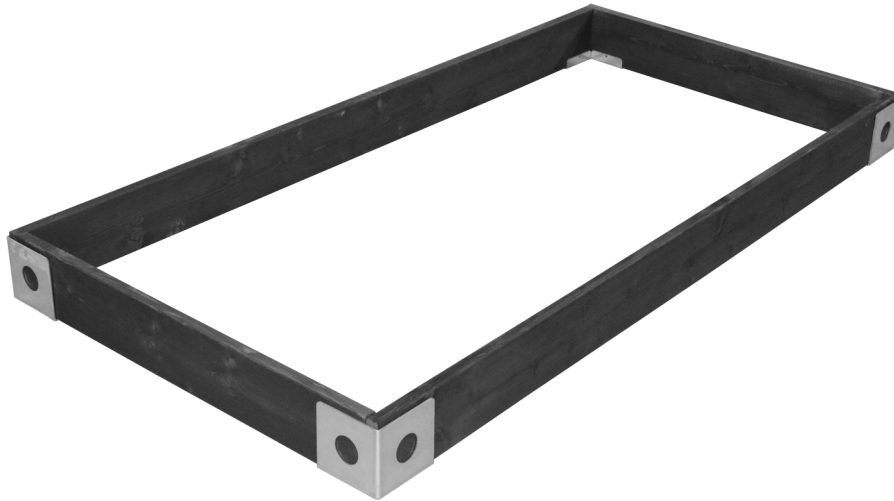




Assembly Instructions

785C
Raised Bed with
Decorative Corners



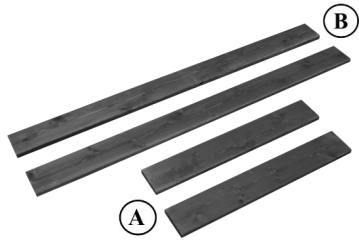
*Thank you for choosing **A&L Furniture Co.***

We hope that this piece brings you many years of enjoyment!

For help with assembling your furniture,
or if you have missing hardware, please email us at
help@aandlfurniture.com or call us at 866-896-5747

PARTS (included)

- Ⓐ End Boards (2)
- Ⓑ Side Boards (2)



Corner Brackets (4)



HARDWARE (included)

- 1" Screws (8)
- Bit (1)



TOOLS NEEDED

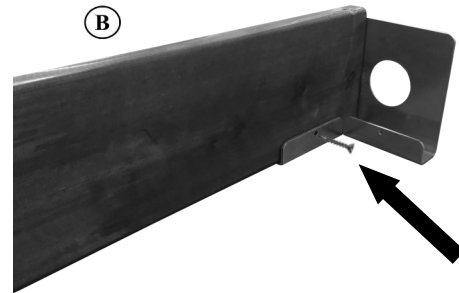
Driver Drill or Phillips Screwdriver

STEP 1

Prepare a level area for installing the raised bed (approx. 4' x 7')

STEP 2

Install corner brackets on each end of the long side boards (B) with a 1" screw.



STEP 3

Lay in the area you want it and install the 2 end boards (A) and insert screws to finish assembly.

